

Plastic collection will start in all areas of Sumida Ward in April 2024

The way to dispose of plastic will change

The new way to dispose of plastic

Plastics and food trays, which are currently collected as burnable garbage and recyclables, will be collected together on the newly set plastic collection day.

(*1) The collection days for food trays will change.

(*2) The collection days for plastic bottles (without labels or caps) will not change.



Up until now

Recyclables (once a week)	Burnable garbage (twice a week)
<ul style="list-style-type: none"> •Food trays 	<ul style="list-style-type: none"> •Plastics →Packaging and containers with ♻️ symbol →Plastic products (generally 30cm or less) 

From April 2024

Recyclables (Plastics Day is once a week)

- Put all products made of plastic into one bag and put them out as recyclables (plastic).



Plastic collection schedule

Please refer to the table below for the schedule of plastic collection, also known as "plastic days," starting in April 2024.

Target area	Plastic day (Once a week)	Target area	Plastic day (Once a week)
Ryogoku, Kamezawa, Ishiwara, Yokoami, Chitose, Midori, Tatekawa	Wednesday 4/3 (Wed) ~	Oshiage, Kyojima, Honjyo 3-4 chome, Higashikomagata 3-4 chome, Narihira, Bunka 1 chome	Monday 4/1 (Mon) ~
Taihei, Yokokawa, Kikukawa, Kotobashi, Kinshi	Saturday 4/6 (Sat) ~	Tsutsumidori 2 chome, Sumida, Higashimukojima 4-6 chome, Yahiro 6 chome	Friday 4/5 (Fri) ~
Honjyo 1-2 chome, Azumabashi, Mukojima, Higashikomagata 1-2 chome, Higashimukojima 1-3 chome, Tsutsumidori 1 chome	Thursday 4/4 (Thu) ~	Tachibana, Higashisumida, Bunka 2-3 chome, Yahiro 1-5 chome	Tuesday 4/2 (Tue) ~

Inquiries

General inquiries about collection
Matters related to collection and sorting

▶ Management and Planning Coordination Section, Sumida Sanitation Department TEL:5608-6922
▶ Sumida Sanitation Department (Branch Office) TEL:3613-2228

Place in the designated location
by 8:00 a.m. on the day of collection

Recyclables **Plastics**

Once a week / collected on Plastics Day

We collect safe and clean 100% plastic materials.

▼ Please refer to the following for information on the plastics to be collected and how to sort (identify) them ▼

Plastic packaging and containers (look for the plastic symbol )

Containers and caps



Cups and packaging



Tubes

Rinse out lightly after using completely
(cutting in half makes it easier to rinse out)



Trays (plate-shaped containers)

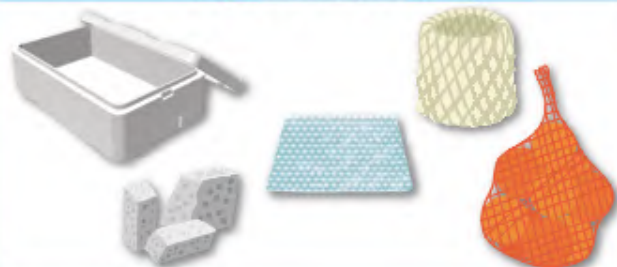
Food trays used to be disposed of on Recyclables Day,
but **will** be disposed of on Plastics Day from now on.



Bags for groceries and daily necessities



Styrofoam, etc.



Plastic products (Products that are approximately 30cm or less on a side and made of 100% plastic material)



Items that cannot be collected as plastic resources



Items that do not become clean* even after a light rinse.



*What is considered not clean
Solid or sticky to the point that residue sticks to the hand when touched or emits a strong odor



Blades and items that may ignite



Items used for home medical care, etc.



Items with non-plastic parts



Screws, rubber, metal, toys and small electronic devices with batteries or electrical wiring



Other Items that cannot be collected (Items that may cause malfunction of recycling equipment)



- String, tape, and sheet-like Items
*Can be collected if cut into 30cm squares
- Items that are too thick to be bent by hand

Collected on a separate day

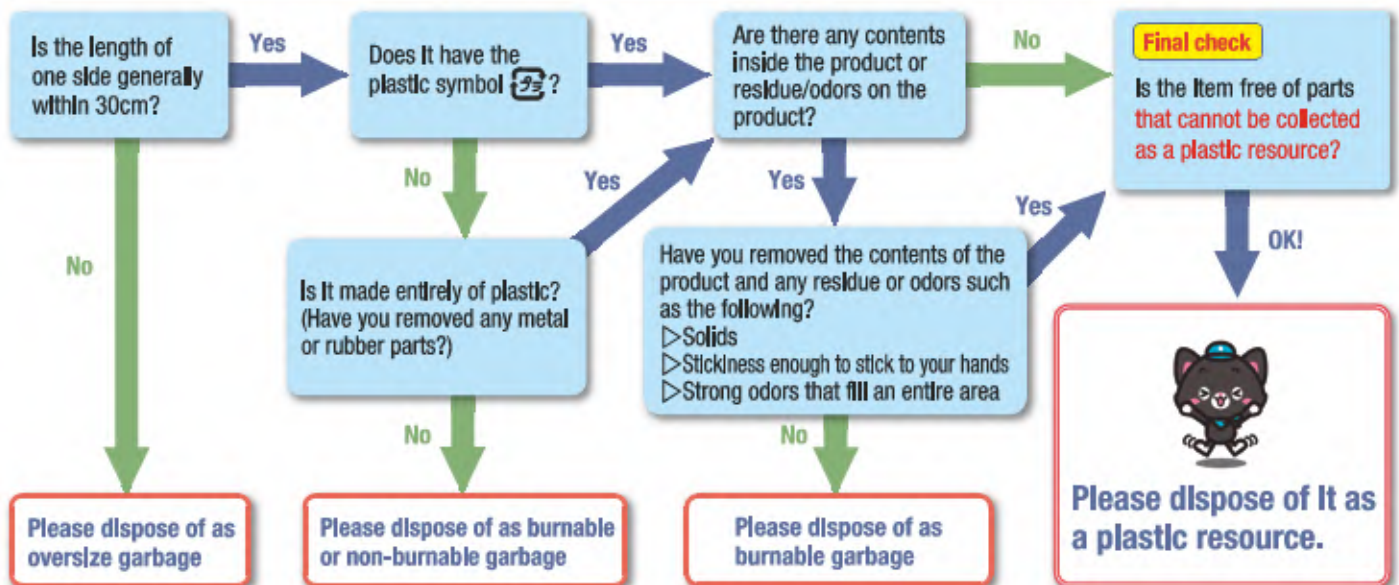
Plastic bottles



Please put plastic bottles out on the day for recyclables (plastic bottles).
*Because of differences in recycling methods, they will be collected separately.

Note: Sumida City will only collect plastics as recyclables from households. Plastics from businesses cannot be collected.

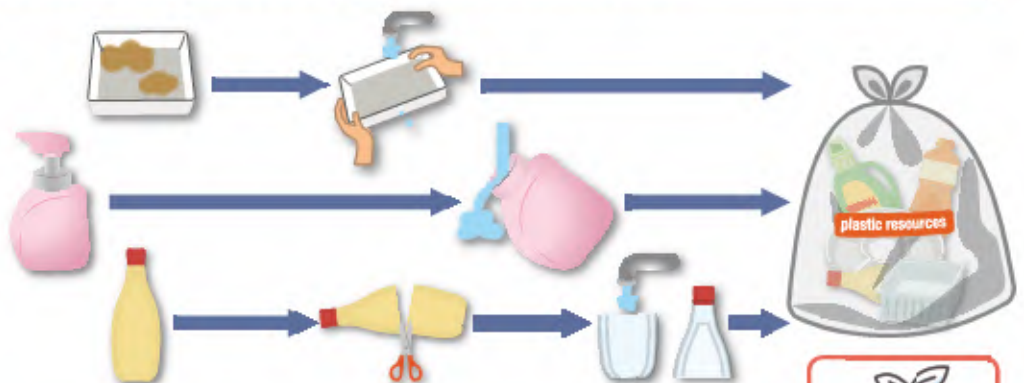
How to separate (identify) plastic resources



How to dispose of plastic resources

If there are any residues or odors, please rinse them lightly with water or wipe them off, place them in a bag with the contents visible, and dispose of them at the collection point or other designated location by 8:00 a.m.

*Please put them all together in one bag as plastic resources.



Request from Sumida City
Do not double-bag!

We tear open the bags to check the contents of all collected plastics. Please do not double-bag collected items (for example, putting items in a small bag and then into a large bag.)

Major questions and answers about the plastic separation



*In addition to the following, the questions and answers are on the Sumida City website.
Please click here to access →

Q1 Do I need to remove the price tags and other stickers?

A1 It can throw away without taking stickers off. If a sticker is easy to remove, please remove it before disposing of the item.

Q2 Should heavily soiled plastic be washed with detergent before being disposed of as a natural resource?

A2 The use of detergents and large amounts water will adversely affect the environment. If the stain is severe, please dispose the garbage as the conventional flammable waste just as usual.

Q3 Why aren't the plastic bottles collected on the plastic day?

A3 The plastic bottles are independent from other plastic resources and undergo a separate recycling process. It can recycle to a high standard and makes an exception of the plastic resources. Please dispose them on the plastic bottles days as usual. Please dispose them on the plastic bottles days as usual.

Q4 Why isn't it collected on the regular recyclable days?

A4 It has decided to establish a new plastic collection day. This decision judged by the general judgement after evaluating the available space at the collection points and other discharge locations, as well as the quality of plastics collected for recycling (with no mixing of other materials).

Q5 In a large apartment buildings, the residents put the trash in small bags, and that the apartment caretaker collects the small bags and packs them into a large bag for disposing. In this case, is this considered the double bagging?

A5 The apartment caretaker can allow to combine small bags of garbage from residents and pack them into larger bags for disposal. Please do not use the double bagging if you dispose a garbage from your home.

Q6 Are there plans to hold an information session for city residents before the full-scale implementation?

A5 Information sessions for city residents will take place at various locations from late January to early March 2024. Once the details of information decide, it will share on the city website and will district a published newsletter in January 2024. (Accessible via the code above)