

To all residents in the area where this flyer is distributed

# The way to dispose of plastic will change

The test collection will start in October 2023 in some areas of Sumida

## The new way to dispose of plastic

Plastics and food trays, which are currently collected as burnable garbage and recyclables, will be collected together on the newly set plastic collection day.

(\*1) The collection days for food trays will change.

(\*2) The collection days for plastic bottles (without labels or caps) will not change.



Information on how to separate garbage is also available on the Sumida City website.

### Up until now

Recyclables (once a week)	Burnable garbage (twice a week)
<ul style="list-style-type: none"> <li>• Food trays</li> </ul>	<ul style="list-style-type: none"> <li>• Plastics</li> <li>→ Packaging and containers with ♻️ symbol</li> <li>→ Plastic products (generally 30cm or less)</li> </ul>

### From October 2023

Recyclables (Plastics Day is once a week)
<ul style="list-style-type: none"> <li>• Put all products made of plastic into one bag and put them out as recyclables (plastic).</li> </ul>

## Test collection areas and collection days

The way to dispose of plastics will change from October 2023 for those who live in the test collection areas shown in the table below

	Recyclables (once a week for each)		Burnable garbage (twice a week)	Non-burnable garbage (twice a month)
	Includes waste paper, glass bottles, cans, plastic bottles, and <del>food trays</del>	<b>Plastics</b> → *Includes food trays		
Sumida 4 to 5-chome	Thu	Fri <span>From Oct 6 (Fri)</span>	Wed, Sat	4-chome: 2nd and 4th Tue 5-chome: 1st and 3rd Tue
Kikukawa 1 to 3-chome	Fri	Sat <span>From Oct 7 (Sat)</span>	Mon, Thu	2nd and 4th Wed
Mukojima 1 to 3-chome	Sat	Thu <span>From Oct 5 (Thu)</span>	Tue, Fri	1st and 3rd Mon
Tachibana 4 to 6-chome	Mon	Tue <span>From Oct 3 (Tue)</span>	Wed, Sat	1st and 3rd Fri
Kamezawa 1 to 4-chome	Tue	Wed <span>From Oct 4 (Wed)</span>	Mon, Thu	1st and 3rd Sat
Narihira 1 to 5-chome	Wed	Mon <span>From Oct 2 (Mon)</span>	Tue, Fri	2nd and 4th Thu

### Inquiries

General inquiries about test collection ▶ Management and Planning Coordination Section, Sumida Sanitation Department TEL:5608-6922

Matters related to collection and sorting ▶ Sumida Sanitation Department (Branch Office) TEL:3613-2228

Place in the designated location  
by 8:00 a.m. on the day of collection

Recyclables

Plastics

Once a week / collected on Plastics Day

We collect safe and clean 100% plastic materials.

▼ Please refer to the following for information on the plastics to be collected and how to sort (identify) them ▼

Plastic packaging and containers (look for the plastic symbol )

Containers and caps



Cups and packaging



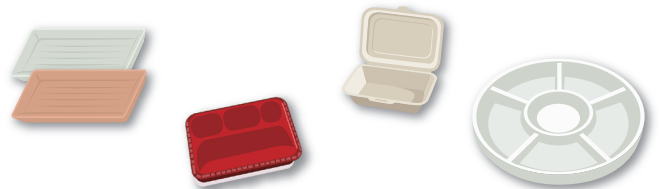
Tubes

Rinse out lightly after using completely  
(cutting in half makes it easier to rinse out)



Trays (plate-shaped containers)

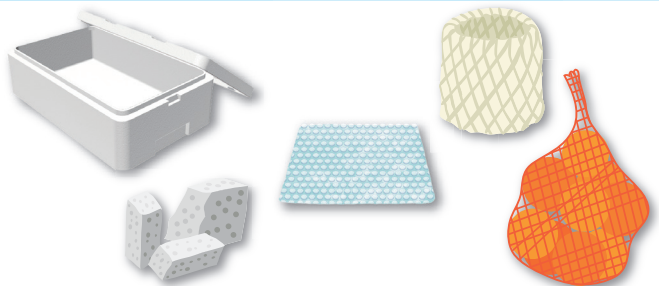
Food trays used to be disposed of on Recyclables Day,  
but will be disposed of on Plastics Day from now on.



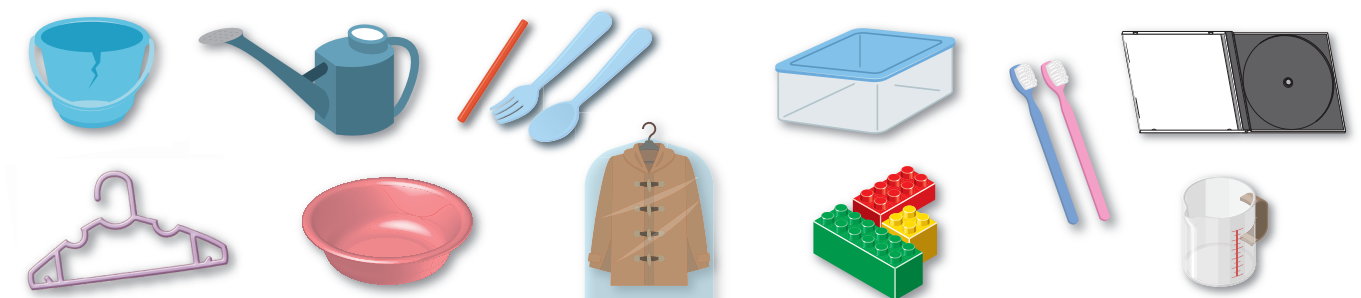
Bags for groceries and daily necessities



Styrofoam, etc.



Plastic products (Products that are approximately 30cm or less on a side and made of 100% plastic material)



# Items that cannot be collected as plastic resources



**Items that do not become clean\* even after a light rinse.**



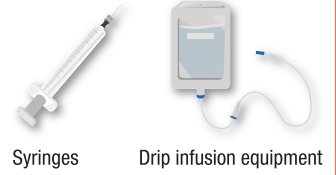
\*What is considered not clean  
Solid or sticky to the point that residue sticks to the hand when touched or emits a strong odor



**Blades and items that may ignite**



**Items used for home medical care, etc.**



**Items with non-plastic parts**



Screws, rubber, metal, toys and small electronic devices with batteries or electrical wiring



**Other items that cannot be collected**  
(Items that may cause malfunction of recycling equipment)

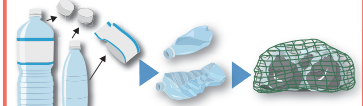


- String, tape, and sheet-like items  
\*Can be collected if cut into 30cm squares
- Items that are too thick to be bent by hand

**Collected on a separate day**

**Plastic bottles**

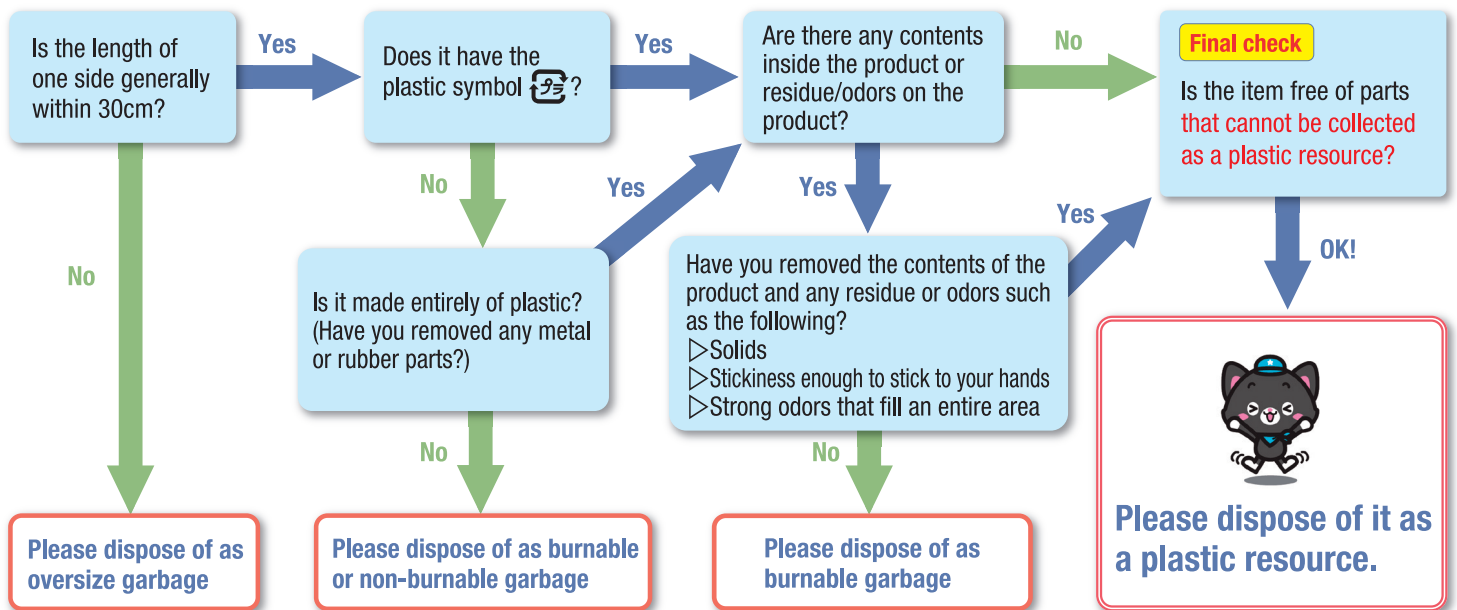
Please put plastic bottles out on the day for recyclables (plastic bottles).



\*Because of differences in recycling methods, they will be collected separately.

**Note: Sumida City will only collect plastics as recyclables from households. Plastics from businesses cannot be collected.**

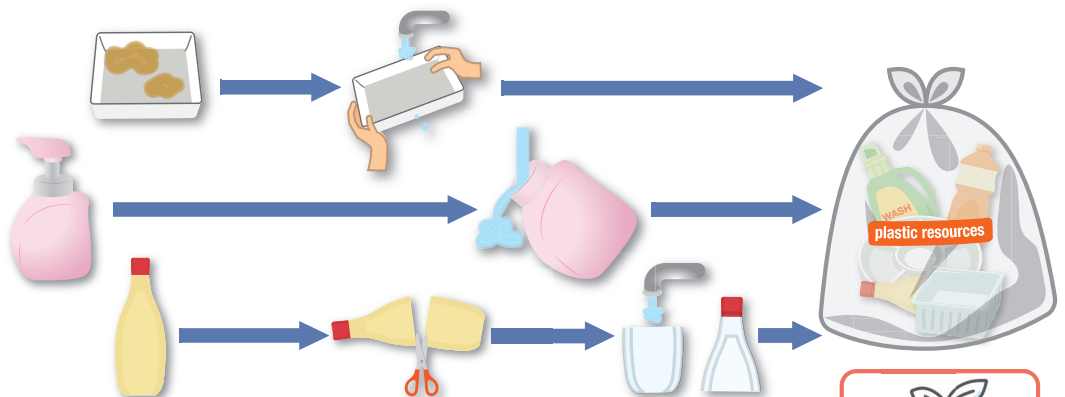
## How to separate (identify) plastic resources



## How to dispose of plastic resources

If there are any residues or odors, please rinse them lightly with water or wipe them off, place them in a bag with the contents visible, and dispose of them at the collection point or other designated location by 8:00 a.m.

\*Please put them all together in one bag as plastic resources.

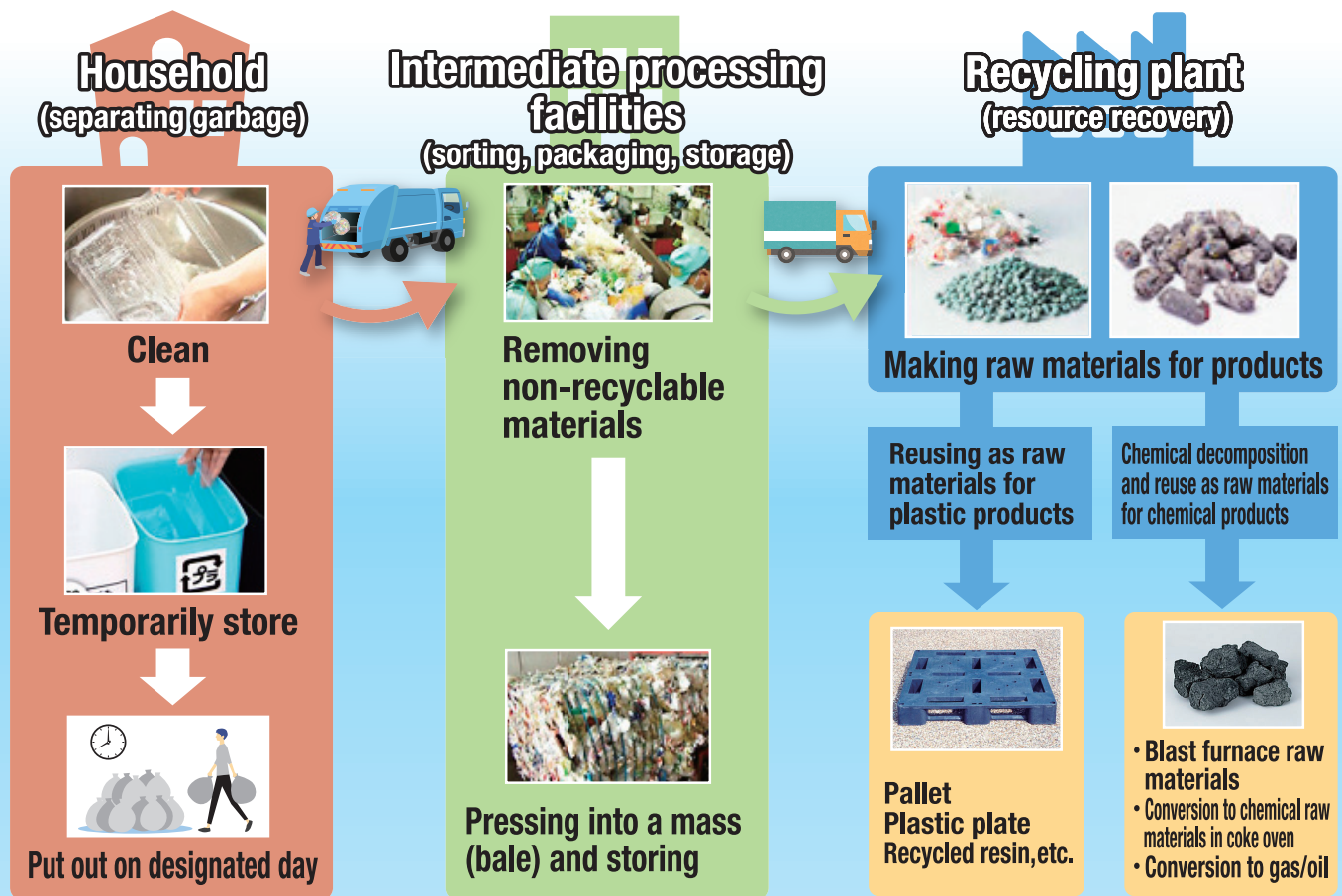


**Request from Sumida City**  
**Do not double-bag!**

We tear open the bags to check the contents of all collected plastics. Please do not double-bag collected items (for example, putting items in a small bag and then into a large bag.)



# Flow of recycling collected plastics



Source: The Japan Containers and Packaging Recycling Association

## ● Requesting your understanding and cooperation in test collection

Although plastic is an indispensable material in our daily lives, it causes various environmental problems, such as greenhouse gas emissions and marine pollution from its disposal as waste. Therefore, the reduction and effective utilization of plastics have become an issue in Japan and abroad. The Act on Promotion of Resource Circulation for Plastics, which came into effect in April 2022, requires municipalities to separate, collect, and recycle waste plastic products.

Currently, plastic is disposed of as burnable garbage in Sumida City. However, in response to the enforcement of the law and in order to realize an environmentally friendly and sustainable Sumida City that does not place a burden on future generations, we will begin to effectively use plastic as a resource rather than disposing of it as garbage.

We will implement test collection in some areas from October 2023, and based on the results of the verification, [we plan to move to a full-scale collection over all of Sumida City in April 2024.](#)

If there is anything unclear about the implementation of the test collection, our staff will provide you with a detailed description, and we will incorporate your opinions and requests into the full implementation. We kindly ask for your cooperation.



**Sumida City was selected as an SDG Future City in 2021, and made the Sumida 2050 Zero Carbon City Declaration.**

